

Fact Sheet 楼盘资料

1.0 DESIGN & LANDSCAPE CONCEPT 设计及景观理念

DESIGN CONCEPT 设计理念

1.1 OVERALL 概况



Cairnhill 16, a luxurious high-end development at 16 Cairnhill Rise, is an exclusive 15 Storey freehold development nestled in the prime residential district of Cairnhill. Minutes' walk from Orchard Road and Newton MRT station, this centrally located property is well connected and within easy access to the convenience of Singapore's exclusive shopping belt. 禧盈峰作为经禧坡的一个豪华高端开发项目，是经禧黄金住宅区极具私密性的15层楼永久地契楼盘。只需步行几分钟即可到达乌节路和纽顿地铁站，位居核中央区，四通八达，去到达新加坡购物带方便快捷。

Inspired by nature, Cairnhill 16 is an oasis in the heart of the city, featuring 39 luxurious units set in an idyllic garden environment. The approach along Cairnhill Rise reveals a development with a contemporary yet unique façade that boldly distinguishes itself from its neighbours. 禧盈峰的设计灵感来自于自然，宛如城市中心的一片绿洲，拥有39个位于田园般花园环境中的豪华单元。走近经禧坡，就会发现它以充满现代感的独特外观脱颖而出。

The sleek lines of the curtain wall are juxtaposed with the distinct and interesting play of timber inspired lattice and timber coloured aluminium screens in

harmonious composition; the cool steel edging contrasting tastefully with the warm timber toned surfaces. The combination expressed in a geometric modernist form appeals to a discerning and sophisticated clientele.

流线型墙体与独特有趣的以木材为灵感的格子及木材色铝合金屏风形成和谐的组合，冰冷的钢边与温暖的木材色调墙面形成的对比别有一番风味。这种几何现代主义表达形式的组合吸引着独具慧眼的高端客户。

Urban Sanctuary – Nature-inspired luxury living城市中的世外桃源-灵感来源自然的奢华生活

- Return to an urban garden, an exclusive luxury sanctuary surrounded by enchanting lush greenery. Melt away the hustle and bustle of urban lifestyle within the city's exclusive shopping belt. 回到城市花园，一个被迷人的茂密绿植包围的独家奢华世外桃源。地处新加坡购物带却不受城市喧嚣的干扰
- A beautiful verdant garden that serves as space for relaxation and moments of serenity, teeming with lovingly tended native trees and plants. 一个美丽的绿色花园，精心栽培着各种本土树木与植物，在这里您可以放松身心，享受静谧时光。
- >40% landscape replacement area. 景观替代区多于40%

Eco-luxury 生态奢华

- Ecologically and socially responsible – prestigious BCA Greenmark Gold Plus certification. 具有生态和社会责任感—享有盛誉的BCA绿标认证
- Green Initiatives – dedicated recycling chute. 环保措施—专用回收槽
- Energy Efficient Fittings – LED lighting, energy efficient air conditioning system and appliances. 节能配件——LED灯，节能空调系统及装置
- Eco-friendly universal electric vehicle chargers for the residents to use., 环保通用电动车充电器供居民使用

1.2 COMMON SPACES/FACILITIES公共空间/设施

The grand and lush entrance lobby at the first storey exudes elegance and sophistication, welcoming the residents and guiding them to the luxurious private lift lobby. 一层绿植簇拥的豪华迎宾大厅雅致高端，欢迎每一位住客并引领他们进入豪华的私人电梯厅。

Despite having a small site area, the landscape design for Cairnhill 16 capitalizes on vertical greening with two sky terraces and a landscaped roof top creating a landscape experience which is magnified and makes the ground space feel bigger than it is. A series of manicured geometric wave lines was introduced onto the ground plane, breaking up the linearity of the building architecture with parts of the groundscape disappearing into the woods. 尽管占地面积不大，朗逸峰的景观设计利用了垂直绿化，包括两个空中露台和一个景观屋顶，为住客创造了一种被放大的观景体验，使地面空间感觉比实际更大。地平面是一系列被修剪成几何波浪线形的植被，支撑建筑的柱子底部被掩映在其中，打破了建筑的直线线条。

These lines were inspired by landforms displaying geometrically repetitive movements and rhythmic folding patterns that slip and slide. They are used to guide the forming of all landscape components of the ground level, translating them into landscape amenities such as swimming pool, water features, passageway, planters, seatwalls, pavement patterns etc. 这些线条的灵感来自于几何上反复运动的地形和有节奏滑动的折叠方式，它们被用来引导地面上所有景观的形成，构造出游泳池，水景，走廊，园艺，坐台，人行道等等这些景观设施的形状。

These amenities will cater to the diverse lifestyle aspirations of the users and provide a holistic living environment for the residents. 这些设施将满足用户生活方式多样化的需求，为住户提供一个整体的生活环境。

Facilities设施

Ground floor地面层

- Entrance drop-off featuring 16 water candles as a strong focal and memorable physical address for the development 入口下客点有16支水中蜡烛，作为小区的一个吸睛点，使人留下深刻的印象。
- Lobby textured feature wall gives an illusion of movement, which uplifts and inspires arrival. 大厅墙面的纹理给人一种变幻的错觉，使来宾提神醒脑
- A 20m azure pool appears as it originates from the woods, gently vanishing over an infinity edge, beckoning residents for a rejuvenating afternoon respite. 20米的天蓝色水池仿佛从树林中流出，渐渐消失在无边泳池的边缘，召唤者住户来个恢复活力的午休
- An iconic 2-storey multi-purpose pavilion with a feature tree that overlooks the pools and landscape in the development. 标志性两层多功能亭阁，一旁种有一颗很有特色的树，登上亭阁可以俯瞰泳池和小区景观
- A kid's pool with water bubblers. 一个带喷泉的儿童泳池
- A long linear 3-4 m tall green cage was proposed to create a cozy, private secluded corner for a Jacuzzi Pool with a trellis above it. 按摩泳池上3-4米高的线型树笼创建一个舒适，私密的角落
- Indoor gym – overlooking the landscape and pool.

室内健身房 – 俯瞰小区景观及泳池

2nd Storey Fitness Terrace 2层健身平台

- To allow users to enjoy fitness activity in a natural setting, having a holistic approach to wellness. 让住户可以在自然环境下开展健身活动，有助身心健康

7th Storey Reading Lounge 7层-阅读厅

- A landscape area with casual outdoor furniture to allow users to indulge and contemplate in the surrounding greenery. 景观区设有休闲户外家具，让住户可以在绿荫丛中沉思冥想。

Roof Terrace 屋顶露台

- A Teppanyaki themed outdoor dining with refined cooking facilities such as electrical operating hot plate, granite counter top with sink and adequate seating. 一个铁板烧主题户外餐厅，配备高端烹饪设备如电动操作热板，带水槽的花岗岩吧台和充足的座位。
- A BBQ charcoal grill themed outdoor dining experience with facilities such as grill pit, granite countertop with sink and adequate seating. 一个炭木烧烤主题户外餐厅，配备烤槽，带水槽的花岗岩吧台和足够的座位
- Linear water feature with bubblers and planters at the background that give an upscale touch to the development as a point of interest. 以喷泉和园艺为背景的线型水景，作为一个有趣的地方，让小区更显高级

1.3 APARTMENT UNITS 公寓单元

The 39 well-crafted apartment units are distinguished by their functional and efficient space planning. Private lifts are provided for all units, and living and dining areas open out to the views beyond. 39个公寓单元以其功能性及高效空间规划而著称。所有单元配备私人电梯，客厅和餐厅可以观赏远处风景

Well-designed bathrooms with designer fittings and elegant cabinetry works complement the luxurious stone finishes. The carefully selected materials and finishes achieve a timeless and elegant interior environment. 精心设计的卫生间配备石材质感的名牌配件和优雅橱柜。精心挑选的材料和饰面为住户创造出永恒优雅的内部环境。

Throughout the apartment, thoughtfully designed spaces abound. The architects have paid meticulous attention to ensure every aspect of the development has been refined up to the smallest detail. 整个公寓充满精心设计的空间。建筑师们一丝不苟，确保每个小细节都被优化到最佳。

Units 单元

- Private lift access for all units. 所有单元配备私人电梯
- Unit layout – meticulously designed with efficient use of space. 单元分布-精心设计，高效利用空间
- Wide frontage – Living Dining areas side by side with flexibility for reconfiguration. 周边-紧邻生活用餐区，灵活的重新配置
- Daylighting – full height curtain walls wrap around the corner of bedrooms to offer wide view angles. 采光-全高度的幕墙环绕卧室角落，提供了广阔的视角
- High Ceiling – Ranging from 3.2 metres and 2.8 metres for all units. Additional height (4.2m and 2.8m) for 14th Storey units. 高天花板-所有单位层高 2.8米-3.2米不等。14层单位增高（2.8米-4.2米）

- Luxurious fittings – imported kitchen, luxury branded kitchen appliances, rose gold luxury branded sanitary fittings, etc. 豪华配件-进口厨房，豪华品牌厨房电器，玫瑰金色豪华品牌卫浴配件
- Nature inspired balcony sunshading screens provided for Type CS and Type D units along West facing façade. 面朝向西的CS户型和D户型提供阳台遮阳屏风，其设计灵感来源自然

2.0 LOCATION & AMENITIES
(Within 2km of Cairnhill 16)
位置及设施（禧盈峰2公里内）

1. Country Club 乡村俱乐部 a. The American Club
2. Hotel酒店 a. Goodwood Park Hotel b. Orchard Hotel c. Sheraton Towers
3. Medical 医疗 a. Mount Elizabeth Hospital b. Paragon Medical Centre
4. MRT地铁站 a. Newton (North East Line & Down Town Line) b. Orchard (North East Line)
5. Religious宗教 a. Bethany Church b. Masjid Al-Falah
6. Schools学校 a. Singapore Chinese Girls School b. ACS (Barker Road) c. ACS Junior d. River Valley Primary School e. St Margaret's Primary School
7. Shopping购物 a. Balmoral Plaza b. Orchard Road Sh c. Paragon d. Ngee Ann City (Takashimaya)

3.0 PROJECT INFORMATION 项目信息

Project Description 项目描述	:	PROPOSED NEW ERECTION OF A 15-STOREY RESIDENTIAL FLAT DEVELOPMENT (39 UNITS) WITH BASEMENT CAR PARKS AND FACILITIES AT SKY TERRACES AND ROOF TERRACE AT 16 CAIRNHILL RISE ON LOT 00751M TS27 (NEWTON PLANNING AREA) 15层（39单元）住宅楼，包括地下车库，空中露台和屋顶露台设施。
Development Name 项目名称	:	CAIRNHILL 16 (禧盈峰)
Address 地址	:	16 CAIRNHILL RISE, SINGAPORE 新加坡经禧坡16号
Developer 开发商	:	TSKY CAIRNHILL PTE LTD
District 地区	:	9
Legal Description 法定描述	:	Lot 00751M of Town Subdivision 27
Tenure 地契	:	FREEHOLD 永久地契
Site Area (Including Road Reserve area & Drainage Reserve) 占地面积（包括道路和排水渠专用范围）	:	1,431.40 sqm (15407.6 sqft) 1431.40 平方米 (15407.6平方英尺) (Road reserve area - 16.02 sqm/172.4 sqft), Drainage Reserve Area - 0 sqm)
Plot Ratio 容积率	:	2.8
Gross Floor Area 净建筑面积	:	4,007.92 sqm / 43,141.25 sqft 4007.92平方米/43141.25平方英尺
No. Of Storeys 楼层	:	15
No. Of Units 单位	:	39
No. Of Parking Lots 停车位	:	39 + 1 accessible parking lots 39+1个可用停车位
Total Saleable Area 总可售面积	:	3938 sqm / 42,388 sqft (Pending for Authorities Approval) 3938平方米/42388平方英尺（有关部门审核中）
AMSL 平均海平面以上	:	86.77 AMSL
Expected Vacant Possession 预计交房	:	15 Sep 2023 2023年9月15日
Expected Legal Completion 预	:	15 Sept 2026 2026年9月15日

计竣工

Estimated Construction Period 预计工期	:	30 Months 30个月
Written Permission (WP) 书面许可证	:	ES20190816R0203 dated 26 Nov 2019
Building Plan (BP) 建筑规划	:	A2235-00206-2018-BP02 dated 13th December 2019
Developer Licence 开发商编号	:	C1357
Cheque Payment Mode 支票付款方式	:	TSKY Cairnhill Pte Ltd – Project Account No. 451-309-007-7

4.0 PROJECT TEAM项目团队

Architect 建筑方	:	LAUD ARCHITECTS PTE LTD
Structure Engineer 结构工程	:	LSW CONSULTING ENGINEERS PTE LTD
M&E Engineer 机电工程	:	UNITED PROJECT CONSULTANTS PTE LTD
Quantity Surveyor 材料估算	:	AECOM COST CONSULTING AND PROJECT MANAGEMENT (SINGAPORE) PTE. LTD.
Landscape Architect 景观建筑	:	SITETECTONIX PRIVATE LIMITED
Accredited Checker 认证审核方	:	ENGINEERS ALLIANCE PTE LTD
Project Manager 项目经理	:	TSKY DEVELOPMENT PTE LTD
Main Contractor 主要承包方	:	TIONG SENG CIVIL ENGINEERING PTE LTD & ANG TONG SENG BROTHERS ENTERPRISE PTE LTD JV
Showflat ID 样板房	:	THE ID DEPT

TT Details:

Name of Company:	TSKY Cairnhill Pte Ltd
Bank Name:	United Overseas Bank
Branch code:	001
Bank Account No:	451-309-007-7
SWIFT code:	UOVBSGSGXXX
Name of Branch:	Main Branch
Bank address:	80 Raffles Place, UOB Plaza 1, Singapore 048624

5.0 DESCRIPTION OF UNITS 单位描述

5.1 UNITS DISTRIBUTION (SCHEMATIC DIAGRAM) 单位描述 (示意图)

	01	02	03
	Communal Roof Terrace		M&E
14	D1	C1	B1
13	D	C	B
12	D	C	B
11	D	C	B
10	Communal Sky Terrace 公共空中露台	CS	B
09		CS	B
08		CS	B
07		CS	B
06	Communal Sky Terrace 公共空中露台	CS	B
05		CS	B
04		CS	B
03		CS	B
02	Communal Sky Terrace 公共空中露台	CS	B
01			
B1	Basement Carpark 地下车库		
B2	Basement Carpark 地下车库		

2-Bedroom 2卧
3-Bedroom 3卧
3-Bedroom + Study 3卧+书房
4-Bedroom 4卧

5.2 SITE PLAN 总设计图

LEVEL 1 1层



1st Storey:

- 1 Arrival Drop-Off
- 2 Gym
- 3 Jacuzzi Garden
- 4 Hanging Lounger
- 5 Lap Pool 20m
- 6 Aqua Deck
- 7 Pool Deck
- 8 Feature Pavilion
- 9 Kid's Pool
- 10 Stone Bench
- 11 Entrance Water Feature
- PE Pedestrian Entrance
- AT Accessible Toilet
- BP Bin Point
- ES Electrical Substation
- BC Basement Carpark Entrance
- VS Ventilation Shaft

LEVEL 2 SKY TERRACE



LEVEL 7 7层
SKY TERRACE
空中露台



ROOF TERRACE 屋顶露台



5.3 UNITS BREAKDOWN, STRATA AREA, SHARE VALUE & MAINTENANCE FEES 单元分解，各户型面积，地契份额及小区维护费

Unit Type 户型		Number of Units 单位数	Total No. of Units 单位总数	Strata Area (SQM) 户型面积 (平方米)	Strata Area (SQFT) 户型面积 (平方英尺)	Share Value 地契份额	Estimated Maintenance Fees 预计修护费用
2 Bedrooms 2卧	B	12	13	72	775	6	\$756
	B1	1		72	775	6	
3 Bedrooms 3卧	C	12	22	98	1,055	6	\$756
	C1	1		98	1,055	6	
	CS	9		120	1,292	7	\$882
4 Bedrooms 4卧	D	3	4	162	1,744	8	\$1,008
	D1	1		162	1,744	8	

Estimated \$126 per Share

2卧

2-BEDROOM

Approx. 72 sqm / 775 sqft

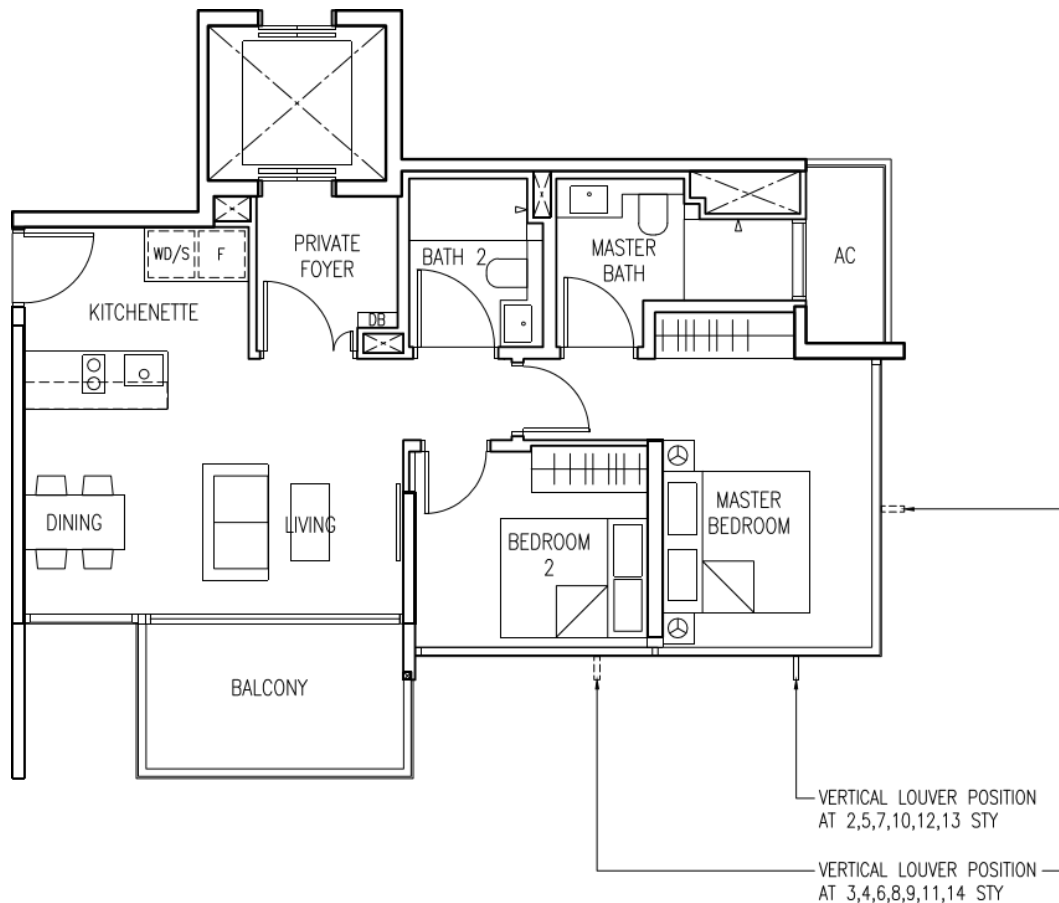


TYPE B

Clear Ceiling: 3.2m
#02-03 to #13-03

TYPE B1

Clear Ceiling: 4.275m
#14-03

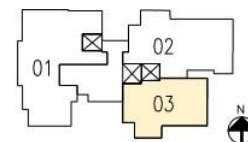


0 0.5 1 1.5 3 5M

DRAWN TO SCALE 1:100

LEGEND:

AC - AIRCON LEDGE
F - FRIDGE
DB - DISTRIBUTION BOARD
WD - WASHER CUM DRYER
S - STEAM OVEN



- THE BALCONY IN THE UNIT SHALL NOT BE ENCLOSED UNLESS WITH THE APPROVED BALCONY SCREEN. FOR ILLUSTRATION OF THE APPROVED BALCONY SCREEN, PLEASE REFER TO THE LAST PAGE OF THIS BROCHURE.
- ALL PLANS ARE SUBJECT TO CHANGE AS MAY BE REQUIRED OR APPROVED BY THE RELEVANT AUTHORITIES. INDICATED FLOOR AREAS ARE APPROXIMATE MEASUREMENTS AND AREA SUBJECT TO FINAL SURVEY.

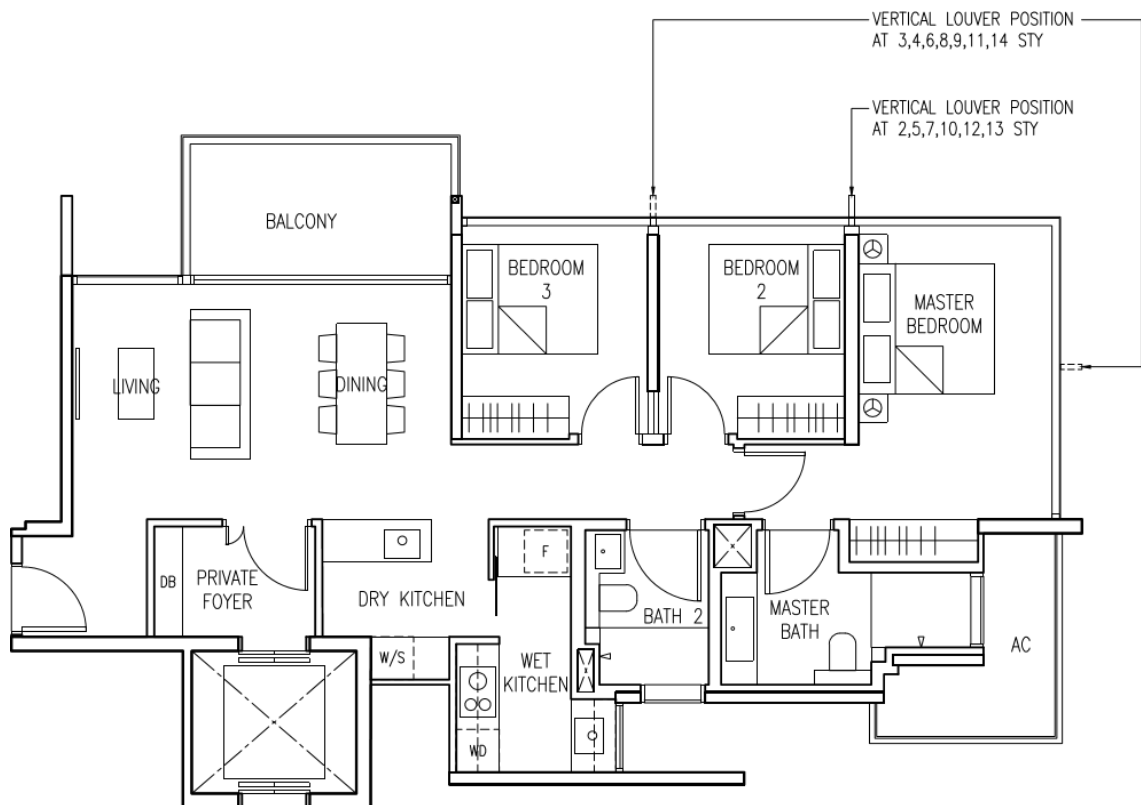
3卧

3-BEDROOM

Approx. 98 sqm / 1055 sqft

TYPE C
Clear Ceiling: 3.2m
#02-02 to #13-02

TYPE C1
Clear Ceiling: 4.275m
#14-02

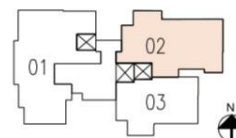


0 0.5 1 1.5 3 5M

DRAWN TO SCALE 1:100

LEGEND:

AC - AIRCON LEDGE
F - FRIDGE
DB - DISTRIBUTION BOARD
WD - WASHER CUM DRYER
S - STEAM OVEN
W - WINE CHILLER



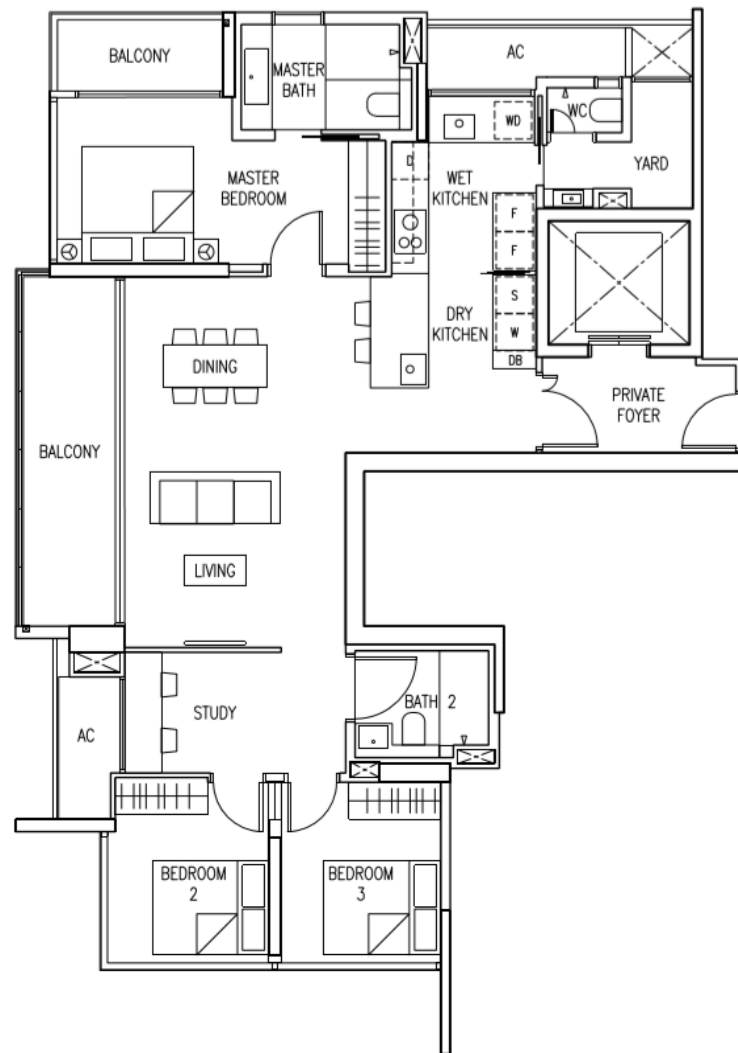
- THE BALCONY IN THE UNIT SHALL NOT BE ENCLOSED UNLESS WITH THE APPROVED BALCONY SCREEN. FOR ILLUSTRATION OF THE APPROVED BALCONY SCREEN, PLEASE REFER TO THE LAST PAGE OF THIS BROCHURE.
- ALL PLANS ARE SUBJECT TO CHANGE AS MAY BE REQUIRED OR APPROVED BY THE RELEVANT AUTHORITIES. INDICATED FLOOR AREAS ARE APPROXIMATE MEASUREMENTS AND AREA SUBJECT TO FINAL SURVEY.

3卧+书房

3-BEDROOM + STUDY

Approx. 120 sqm / 1292 sqft

TYPE CS
Clear Ceiling: 3.2m
#02-01 to #10-01

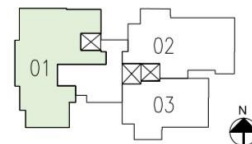


0 0.5 1 1.5 3 5M

DRAWN TO SCALE 1:100

LEGEND:

AC - AIRCON LEDGE
F - FRIDGE
DB - DISTRIBUTION BOARD
WD - WASHER CUM DRYER
S - STEAM OVEN
W - WINE CHILLER
D - DISH WASHER



- THE BALCONY IN THE UNIT SHALL NOT BE ENCLOSED UNLESS WITH THE APPROVED BALCONY SCREEN. FOR ILLUSTRATION OF THE APPROVED BALCONY SCREEN, PLEASE REFER TO THE LAST PAGE OF THIS BROCHURE.
- ALL PLANS ARE SUBJECT TO CHANGE AS MAY BE REQUIRED OR APPROVED BY THE RELEVANT AUTHORITIES. INDICATED FLOOR AREAS ARE APPROXIMATE MEASUREMENTS AND AREA SUBJECT TO FINAL SURVEY.

4-BEDROOM

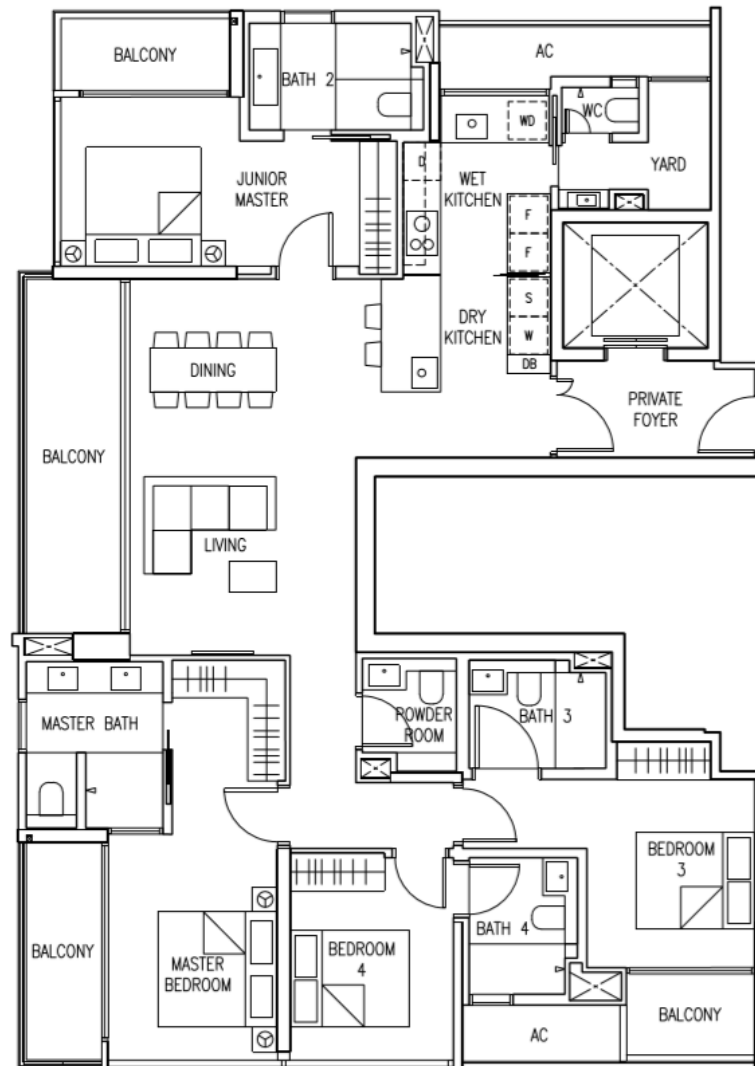
Approx. 162 sqm / 1744 sqft

TYPE D

Clear Ceiling: 3.2m
#11-01 to #13-01

TYPE D1

Clear Ceiling: 4.275m
#14-01

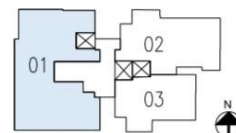


0 0.5 1 1.5 3 5M

DRAWN TO SCALE 1:100

LEGEND:

AC - AIRCON LEDGE
F - FRIDGE
DB - DISTRIBUTION BOARD
WD - WASHER CUM DRYER
S - STEAM OVEN
W - WINE CHILLER
D - DISH WASHER



- THE BALCONY IN THE UNIT SHALL NOT BE ENCLOSED UNLESS WITH THE APPROVED BALCONY SCREEN. FOR ILLUSTRATION OF THE APPROVED BALCONY SCREEN, PLEASE REFER TO THE LAST PAGE OF THIS BROCHURE.
- ALL PLANS ARE SUBJECT TO CHANGE AS MAY BE REQUIRED OR APPROVED BY THE RELEVANT AUTHORITIES. INDICATED FLOOR AREAS ARE APPROXIMATE MEASUREMENTS AND AREA SUBJECT TO FINAL SURVEY.

5.4 **FITTINGS & FIXTURES** 配件及器材

Smart Home Features 智能家居配件	Smart Hub, Smart lightning, Digital door lock, Aircon smart card, Intercom, Car plate recognition system, AV Intercom VCP c/w QR reader, Card access CCTV, Smart Community Management System智能中心, 智能灯, 电子门锁, 对讲机, 车牌识别系统, 带有二维码读码器的音频视频对讲机, 门禁卡监控, 智能物管系统
Kitchen Appliances厨房电器 品牌	V-Zug
Sanitary Fittings卫浴配件品牌	Grohe
Sanitary Wares卫浴洁具	Grohe (Smart WC (Sensia Areana) for 4-bedroom units)
Steam Bath 桑拿房	In Master bathroom for 4-bedroom units only 仅供4卧单元主卧
Air-conditioners空调	Multi Split System for bedroom/Ducted System for living/dining 卧室一拖多系统 / 客厅餐厅管道系统

CAIRNHILL 16 FAQ 禧盈峰常见问题

A. General 概述

1. What is the Cairnhill Arts Centre about? 禧盈峰艺术中心是做什么的

One-Two-Six Cairnhill Arts Centre is an arts venue that hosts a variety of tenants (including drama school Act 3 International, malay theatre company Teater Kami). One-Two-Six禧盈峰艺术中心是一个招待各种租客的艺术场所

2. What is the height clearance of the Arts Centre for units facing it? Which level will clear the Art Centre roof? 艺术中心楼高多少? 从几层开始高过艺术中心楼/

The Cairnhill Art Centre is up to 3 storeys tall. Units at 6 storey and above should be able to clear the Art Centre. 禧盈峰艺术中心有3层楼高。6层以及上楼层可超过艺术中心楼高。

3. Are the residents allowed to access the staircase to Cairnhill Road via the Arts Centre?

住户可以穿过艺术中心去到经禧路吗?

No, as it is a private property. 不可以, 艺术中心属于私人地产

4. Where is concierge room located ? 礼宾部在哪?

It can be located at the 1st storey room beside the drop-off area. 在一楼下客点旁边的房间

5. What is the scope of the concierge service and the operating timing. 礼宾服务范畴和运作时间

There will be an operator to provide concierge service for receiving parcels, making reservations and providing bellhop services. The service operating hours will be established later by the Developer. 礼宾部会有一个工作人员, 提供接收包裹, 预约服务和管家服务。开发商随后将发布其运作时间

6. Is there a basement Carpark ventilation system ? 地下车库有通风系统吗?

Yes there is a Basement Carpark ventilation system. Basement Carpark is mechanically ventilated. Location of exhaust louvers are indicated in the site plan as "VS". 地下车库采用机械通风。排气口位置在小区规划图中标有“VS”处

7. Provide write-ups on the smart home features for apartment and common area especially on the security and car plate recognition system 提供单位内和公共区域特别是安保和车牌识别系统的智能家居功能介绍

Within each apartment: 每个单元内

Smart Hub 智能中心

Lighting module to 3 circuits 3个

3个电路的照明模块

Digital door lock 电子门锁

Smart Door Bell (only to Type B/B1 – 9 units)

智能门铃 (仅限B/B1-9单元户型)

Integration of Aircon Smart card

智能空调集成卡

Intercom unit 对讲机单元

Within community 小区内

Car Plate recognition car park system

汽车入库车牌识别系统

AV Intercom VCP c/w QR reader

带有二维码扫码器的音频视频对讲机

Card AccessCCTV 门禁卡刷卡监控

Smart Community Management System 智能小区物管系统

8. What is the size and capacity of indoor gym? How many equipment / stations ? 室内健身房多大? 可容纳多少人? 多少器材?

The size of gym is est 16 sqm. There are 4 stations within the gym. You can have up of the 4 users at the gym.

大约16平米。4个器材。最多可容纳4人

9. What is the elevation (m) from road level to level 2 units?

从路面到二层的海拔高度是多少？（米）

Approximately 7m from Cairnhill Rise 距经禧坡约7米

10. Any broadband provision for all common areas? 所有公众区域是否提供无线网？

There will be Wifi coverage for pool deck only. There will not be provision at other areas. 只有泳池甲板区覆盖无线网。其他区域不提供。

11. Fibre optics installed? 有安装光纤吗？

Yes, fibre termination point will be provided in all residential units. 有。所有单元内提供光纤终端。

B. Apartment Units 单元

1. Dry and Wet Kitchen & Yard - Is there hot water provisions ?

干湿厨房和院子有热水吗？

-Hot water provision to Dry kitchen, Wet kitchen and WC (shower). No hot water provision to Yard basin. 干湿厨房，厕所（淋浴）均提供热水。院子水槽无热水。

2. Can 3BR+S wall separating Study and Living room be hacked ? Any services affected ?

3卧+书房户型，书房和客厅的隔墙可以拆吗？有提供相关服务吗？

The wall separating the Study and Living room is non structural and can be removed at owner's discretion.

The Ducted AC louvers are located above the wall within the false ceiling as per showunit. However, there are electrical sockets located on that wall that would need to be rerouted when the wall is removed. 书房和客厅的隔墙非承重墙，屋主可按意愿拆除。如样板间所示，管道式空调出风口位于墙上方假天花板中。可是这面墙上有电源插座，拆墙时需要重新排线。

3. Can we combine 2 units into one ? Which stack combination is practical ?

2个单元可以合并吗？哪种户型可合并？

No units can be combined as they are separated by structural walls.

所有单元均不可合并。因为隔开单元间的隔墙都是承重墙。

4. Balcony - Is the Water point and electrical point located at same side of the balcony?

阳台一 出水口和取电口在阳台的同一边吗？

No, they are located on opposite sides.

不是，分别位于阳台两边。

5. Why are the power & water points located on different side of the balcony?

为什么出水口和取电口各自分布在阳台两边？

To distance the electrical appliances /equipment from the water point.

使电器和取水口分隔开

6. Where to place TV in bedroom ? 电视机可以放在卧室哪里？

TV point & electrical outlets shall be provided at the wall opposite the bedhead indicated in the brochure.

If a curtain wall is located opposite the bedhead, TV points & electrical outlets shall be provided at the next closest wall, where a console stand can be positioned for the TV. 如宣传册所示，电视机插口和电源插座位于床头对面的墙上。如果床头对面是玻璃幕墙，电视机插口和电源插座则位于旁边的衣柜墙面上，此墙面可安装电视机遥控座。

7. Is it possible to convert one of the 4 BR toilet to a walk-in wardrobe or study? Any implications to TOP and authorities compliances? 可以将4卧户型其中一个厕所改成衣帽间或者书房吗？对入伙证有影响吗？是否符合有关部门规定？

No.不可以

8. Wash basin at yard is small. Can review for a larger wash basin ?

院子里的水槽很小。可以换大点的吗？

The current minimal size of the basin allows for a larger counter space.

水槽越小，洗手台空间越多

9. Is it possible to install a bidet spray pipes in all bathrooms? 可以在素有洗浴间安装浴缸花洒吗?

Handheld bidet spray is provided for all baths and powder rooms, excluding

- the 4 bedroom master baths where the smart WC is provided; and
- the WC at yards

所有洗浴间和盥洗室均装有手持花洒，不包括

-4卧主卧（智能厕所）

-院子里的厕所

10. Any special treatment to the windows on units facing the west? 面向西边的单位，其窗户有什么特殊处理吗？

The sunscreen will be provided for the Stack 01 units (Living/dining/balcony) that faces the west.

The sunscreen is specially design in such that it will create a nice “ko-mo-re-bi” shadow casting effect. 面朝西所有楼层的01单元（客厅/餐厅/阳台）提供遮阳屏风。遮阳屏风特别设计成树影投影的效果。

11. Is the gas supply via town gas or via cylinders ?

燃气是城市燃气还是燃气罐？

It will be via town gas. 城市燃气